

4/6/2023 Rider Experience and Operations
Committee Meeting Written Public
Comment Submissions

Submissions

Stephan Fesler 2

Stephan Fesler

Good morning boardmembers:

More for you to see what riders see every day. This is U District Station today:





Bicyclist Conduct

- General Rules**
 - Follow all traffic rules.
 - Do not drink and ride or ride under the influence of alcohol.
 - Do not give bicycles to children unless parents are present and supervise.
 - Do not use bicycles for commercial purposes.
 - Do not use bicycles for illegal activities.
 - Do not use bicycles for illegal purposes.
- On Trains**
 - Bicycles are only allowed on trains marked with a bicycle symbol.
 - Do not use bicycles on trains marked with a bicycle symbol.
 - Do not use bicycles on trains marked with a bicycle symbol.
 - Do not use bicycles on trains marked with a bicycle symbol.
- On Buses**
 - Bicycles are only allowed on buses marked with a bicycle symbol.
 - Do not use bicycles on buses marked with a bicycle symbol.
 - Do not use bicycles on buses marked with a bicycle symbol.
 - Do not use bicycles on buses marked with a bicycle symbol.

N07-511
BIKE CAGE

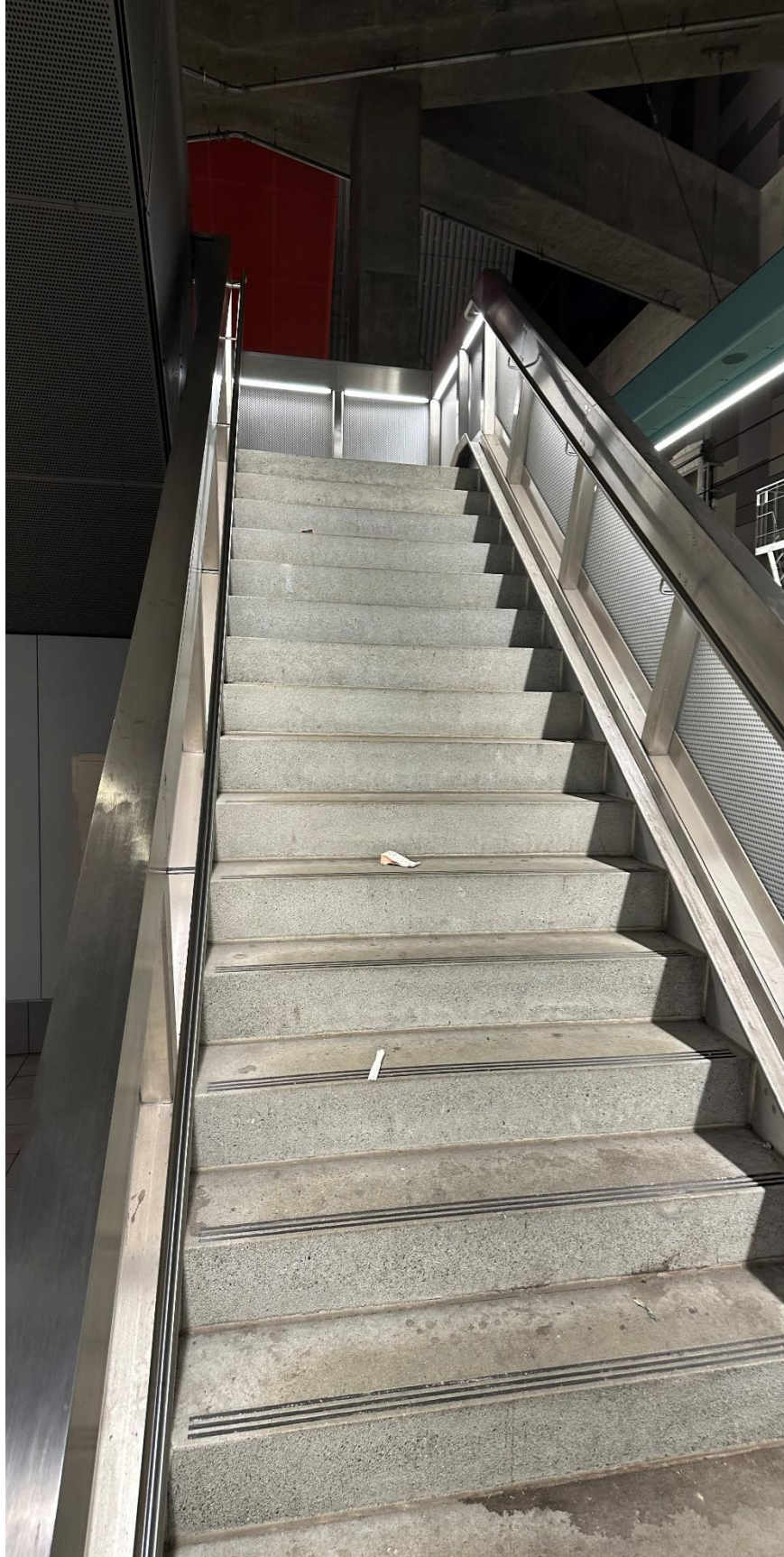
Bike Map



SmartPass









Not pictured: all the garbage and residue that collects at the station platform seats, which seems like a high priority for sanitation.

In the past two weeks, a third of my trains have electrical power system issues with two having to be taken out of service after boarding.

Anyway, I hope this helps you see what riders see every single Link trip as they way for unreliable and low frequency trains.

Kind regards,
Stephen Fesler